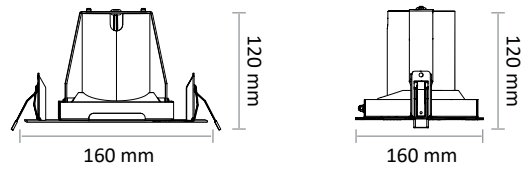
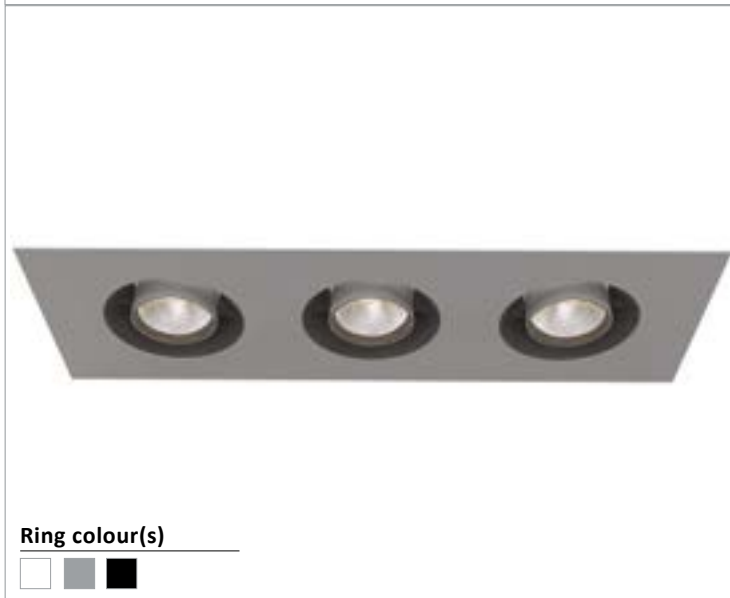
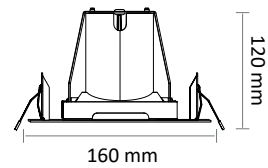
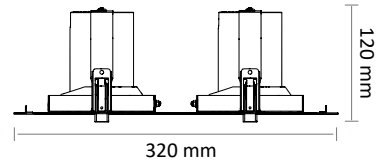




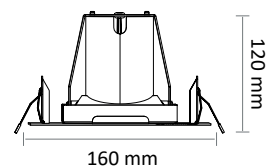
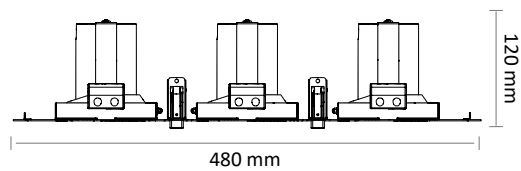
EO 5140-1A ICOB LED



EO 5140-2A ICOB LED



EO 5140-3A ICOB LED



Ring colour(s)



EO 5140-1A2A3A ICOB LED

- Recessed orientable for LED SPOT module, maximum 3x2 784 lumens
- MacAdam Ellipse : 2 SDCM
- CRI of 90
- Available in 3 000 K, 3 500 K and 4 000 K
- 50 000 hours lamp life (L80B10)
- Luminous efficiency of system up to 144,3 lm/W
- Springs in pressure for easier installation
- Ring made of die-cast aluminium
- Aluminium reflective optics
- **Weight** : Approx. 1,3 kg
- **Driver(s)** : Fixed, Dimmable DALI (CDIMMDALI), Casambi, Connect
- **Option(s)** : Fast connector (CORD)
- Photobiological risk group 1

Driver(s)



Standards

Class I | IP 20 | 650° | RG1

Beam(s)



Option(s)



White ring
White interior



Black ring
White interior



Grey ring
White interior



White ring
Black interior

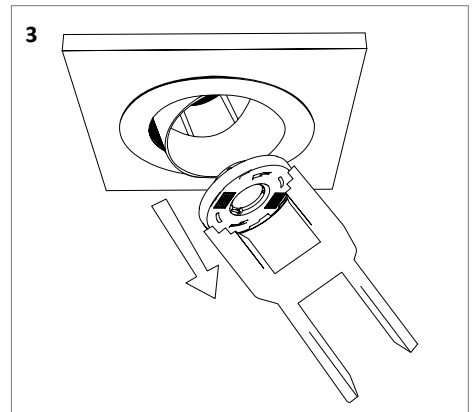
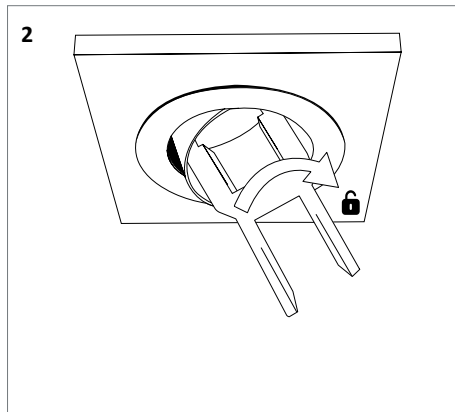
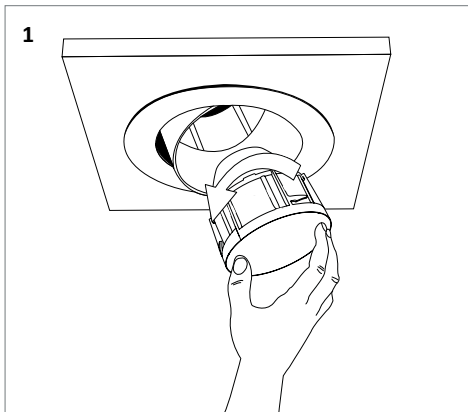


Black ring
Black interior



Grey ring
Black interior

ICOB version



High efficiency performance of the components (HE) IRC 90

ITEM	POWER	CONSUMPTION	LUMINOUS FLUX	SYSTEM EFFICIENCY	COLOURS TEMPERATURE	CRI	EFFICIENCY ENERGY CLASS
EO 5140-1A LED ICOB HE 2800-930	16,6 W	19,3 W	2771 lumens	143,6 lm/W	3000 K	90	E
EO 5140-1A LED ICOB HE 2800-935	16,6 W	19,3 W	2752 lumens	142,6 lm/W	3500 K	90	E
EO 5140-1A LED ICOB HE 3000-940	16,6 W	19,3 W	2784 lumens	144,3 lm/W	4000 K	90	E
EO 5140-2A LED ICOB HE 2800-930	2x16,6 W	2x19,3 W	2x2771 lumens	143,6 lm/W	3000 K	90	E
EO 5140-2A LED ICOB HE 2800-935	2x16,6 W	2x19,3 W	2x2752 lumens	142,6 lm/W	3500 K	90	E
EO 5140-2A LED ICOB HE 3000-940	2x16,6 W	2x19,3 W	2x2784 lumens	144,3 lm/W	4000 K	90	E
EO 5140-3A LED ICOB HE 2800-930	3x16,6 W	3x19,3 W	3x2771 lumens	143,6 lm/W	3000 K	90	E
EO 5140-3A LED ICOB HE 2800-935	3x16,6 W	3x19,3 W	3x2752 lumens	142,6 lm/W	3500 K	90	E
EO 5140-3A LED ICOB HE 3000-940	3x16,6 W	3x19,3 W	3x2784 lumens	144,3 lm/W	4000 K	90	E